

ZL series

Subminiature toggle switches • metal bushing



DISTINCTIVE FEATURES

- Ø 4.83 mm threaded bushing
- Solder lug and straight PC terminals



ENVIRONMENTAL SPECIFICATIONS

- Operating temperature : -30 °C to +85 °C (-22 °F to +185 °F)
- Moisture : 21 days 95 % (NFC 20-603 - IEC 8-2-3)



ELECTRICAL SPECIFICATIONS

- Max. current/voltage rating with resistive load :
 - gold plated contacts : 0.4 VA 20 V max. AC or DC
 - silver plated contacts : 0.5 A 48 V max. AC or DC
- Minimum load : 10 mA 50 mV - 10 µA 5 VDC
- Contact resistance : 20 mΩ max.
- Insulation resistance : 1,000 MΩ min. at 500 VDC
- Dielectric strength: 1,000 Vrms 50 Hz min. between terminals and frame, 500 Vrms 50 Hz min. between terminals
- Electrical life at full load :

Contacts	Number of cycles	
	2 positions	3 positions
Gold plated	60,000	30,000
Silver plated	20,000	10,000



GENERAL SPECIFICATIONS

- Strength of terminals : pull-out force 10 N max.
- Torque : 1 Nm max. applied between the 2 nuts
- Max. panel thickness : 1.5 mm (.059) with 2 nuts

The company reserves the right to change specifications without notice.



ZL series

Subminiature toggle switches • metal bushing



MATERIALS

- Case : thermoplastic UL94-V0
- Actuator : brass, nickel plated
- Bushing : zamac, tin plated
- Contacts and terminals :
 - 0 : brass, gold plated (standard)
 - 1 : brass, silver plated
 - 3 : brass, gold plated (1.27 micron gold)
- Terminal seal : epoxy

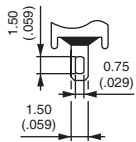


SOLDERING

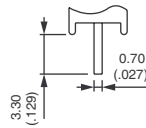
- Hand soldering : 280 °C (536 °F) max. for 5 seconds max.
- Wave soldering : 260 °C (500 °F) max. for 5 seconds max.



TERMINALS



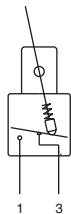
Solder lug S0



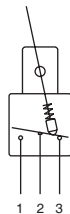
Straight P0



ELECTRICAL FUNCTIONS



Function 1

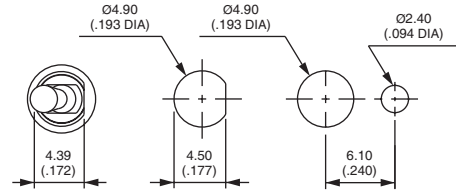


Other function

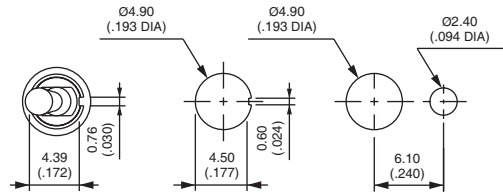


PANEL CUT-OUT

WITH FLAT

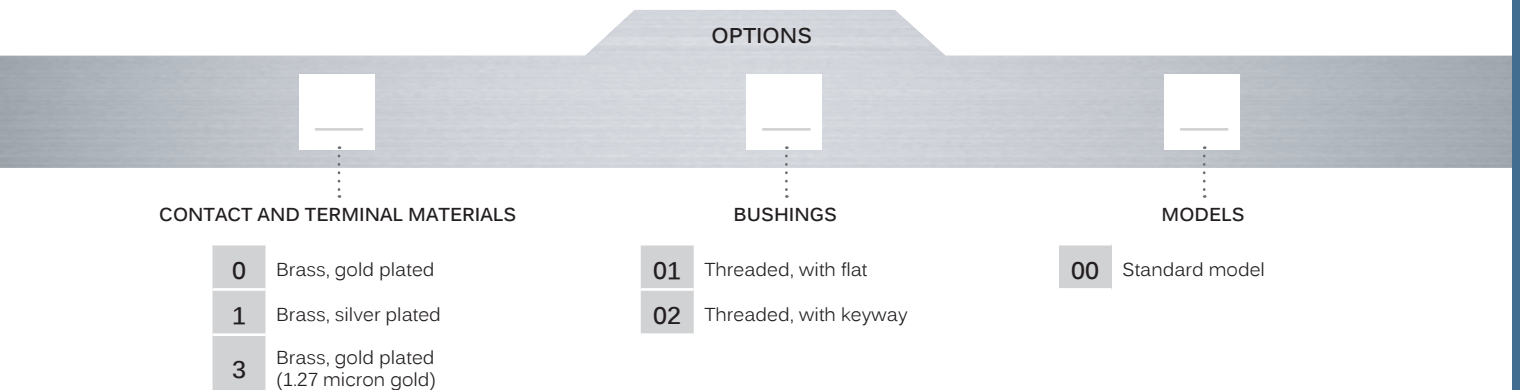
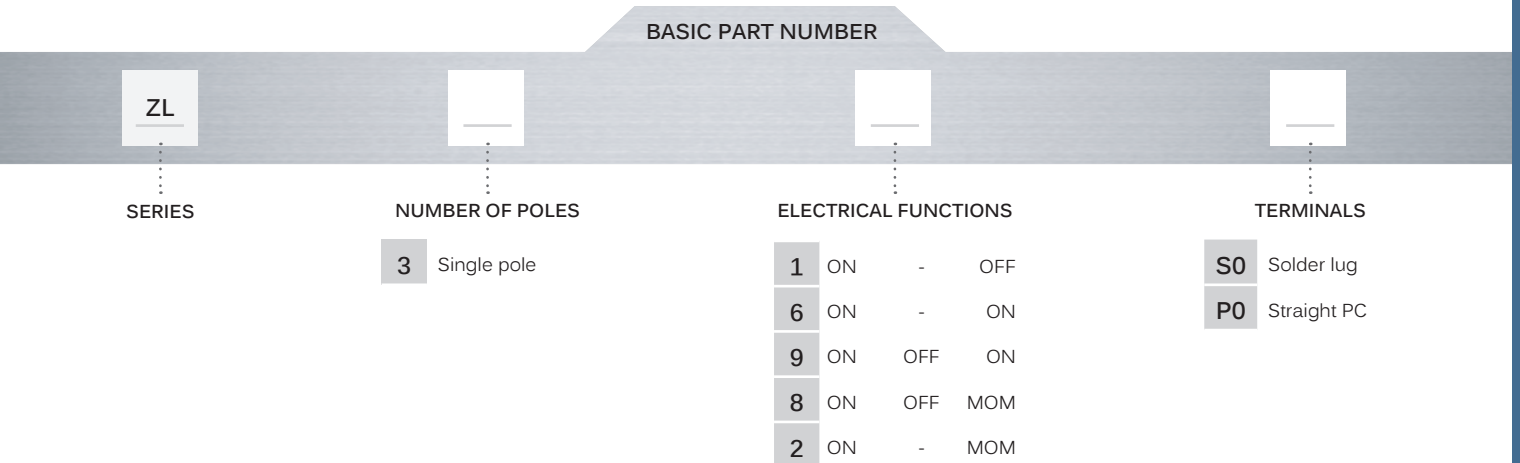


WITH KEYWAY





BUILD YOUR PART NUMBER



ABOUT THIS SERIES

On the following pages, you will find successively basic part numbers of switches and options in the same order as in above chart.



Mounting accessories : Standard hardware supplied with all models : 2 hex nuts 7 mm (.275) across flats P/N U5731, 1 locking ring P/N U5821 (with keyway) or U5831 (with flat) and 1 lockwasher P/N U5841.

ZL series

Subminiature toggle switches • metal bushing

SOLDER LUG TERMINALS



ZL31S0
ZL36S0
ZL39S0
ZL38S0
ZL32S0

	III	II	I
ZL31S0	ON	-	OFF
ZL36S0	ON	-	ON
ZL39S0	ON	OFF	ON
ZL38S0	MOM	OFF	ON
ZL32S0	MOM	-	ON

STRAIGHT PC TERMINALS

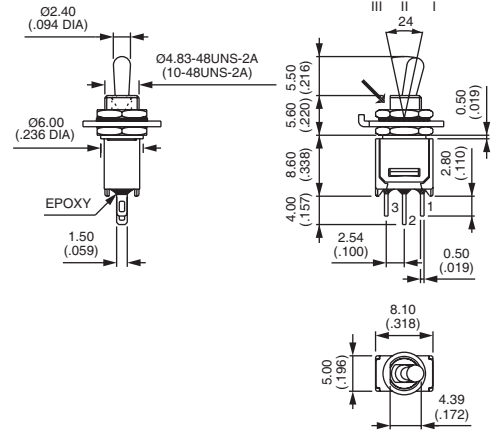


ZL31P0
ZL36P0
ZL39P0
ZL38P0
ZL32P0

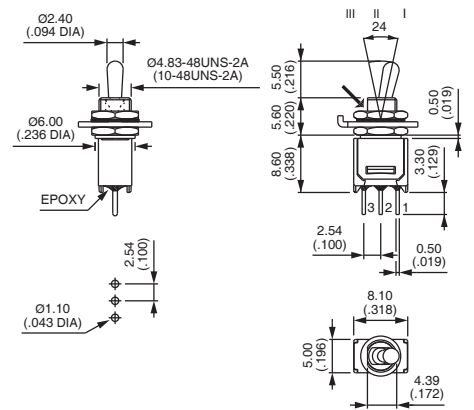
	III	II	I
ZL31P0	ON	-	OFF
ZL36P0	ON	-	ON
ZL39P0	ON	OFF	ON
ZL38P0	MOM	OFF	ON
ZL32P0	MOM	-	ON

Shown with threaded bushing code 01

→ FLAT



→ FLAT

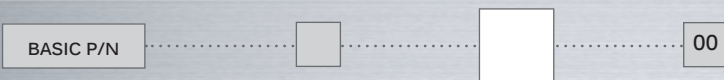


CONTACT & TERMINAL MATERIALS



- 0 Brass, gold plated (standard)
- 1 Brass, silver plated
- 3 Brass, gold plated (1.27 micron gold)

BUSHINGS



- 01 Threaded, with flat
- 02 Threaded, with keyway