

57000 series

VDE approved rocker and paddle switches



DISTINCTIVE FEATURES

VDE marked as standard

UL and CSA approvals also available

Single and double pole configurations



ELECTRICAL SPECIFICATIONS

- Class I (normal insulation)
- Small contact opening : μ (< 3 mm (.118))
- Current/voltage rating with resistive load : 3 A 250 VAC - 6 A 125 VAC
- Dielectric strength :
2,000 Vrms 50 Hz min. between poles and between terminals and frame
1,000 Vrms 50 Hz min. between terminals
- Special case for increased creepage distance and air gap : 3 mm (.118)



MATERIALS

- Contacts : silver
- Case : diallyphthalate (DAP)
- Actuator : polyamide
- Housing : stainless steel or steel tin plated
- Terminal seal : epoxy

APEM products may be recycled at end-of-life for the re-claiming of valuable metal components.

FURTHER SPECIFICATIONS : see 7000 series.

AGENCY APPROVALS

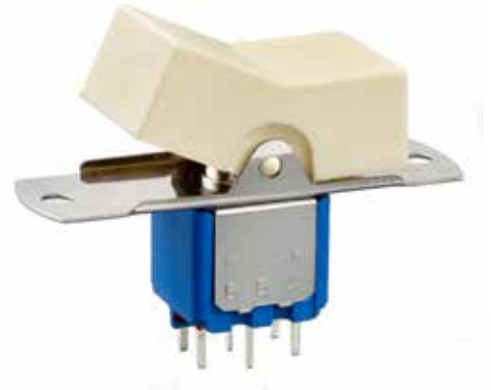


EN 61058-1



Complete appropriate box of ordering format.

The company reserves the right to change specifications without notice.



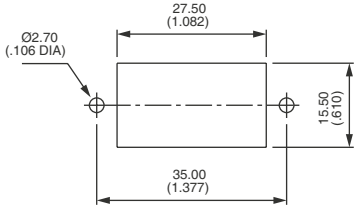
57000 series

VDE approved rocker and paddle switches

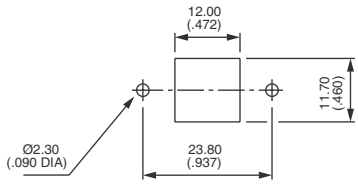


PANEL CUT-OUT

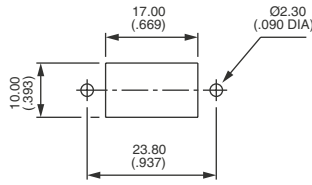
57700 - 57900



57700N - 57900N



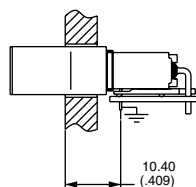
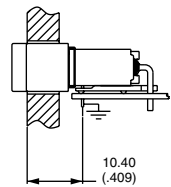
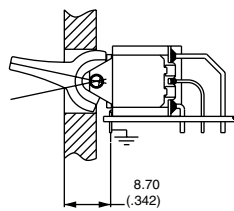
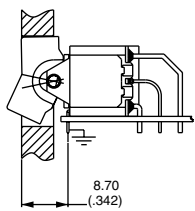
With small rocker **U730**
or small paddle **U700**



With medium rocker **U620**
or medium paddle **U610**



MOUNTING RECOMMENDATIONS

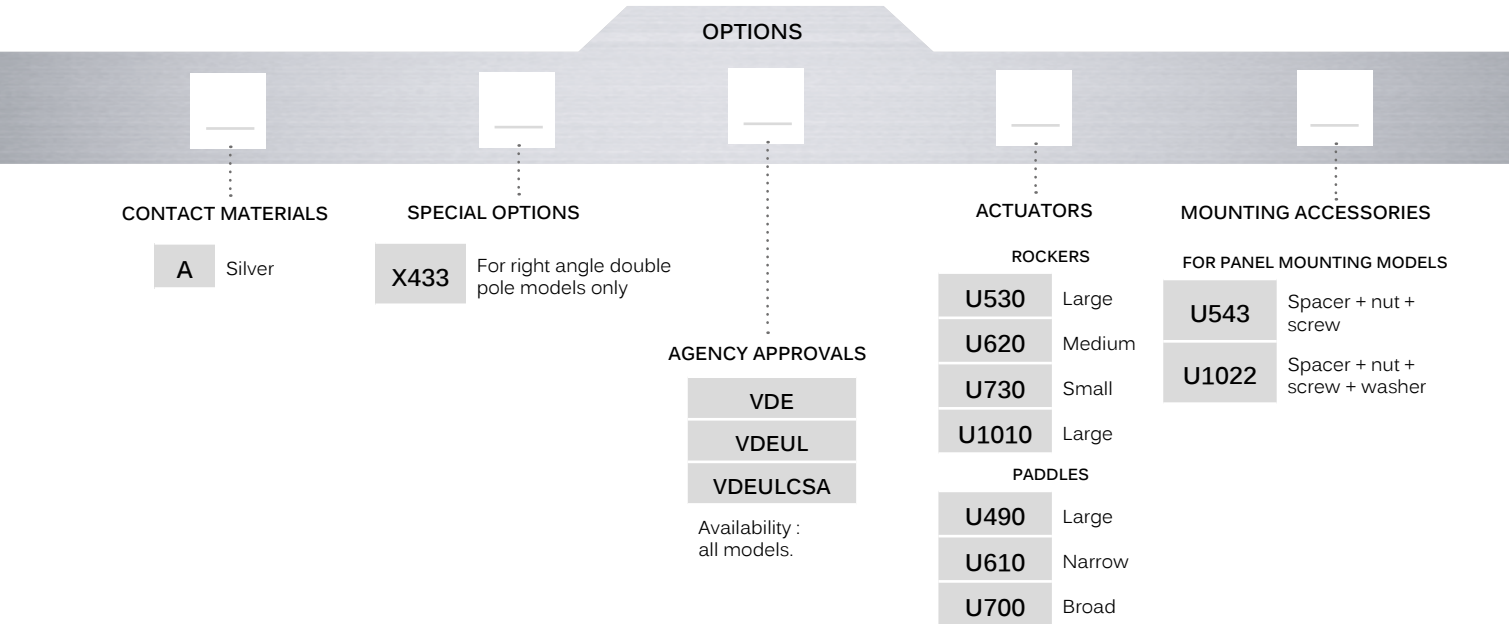
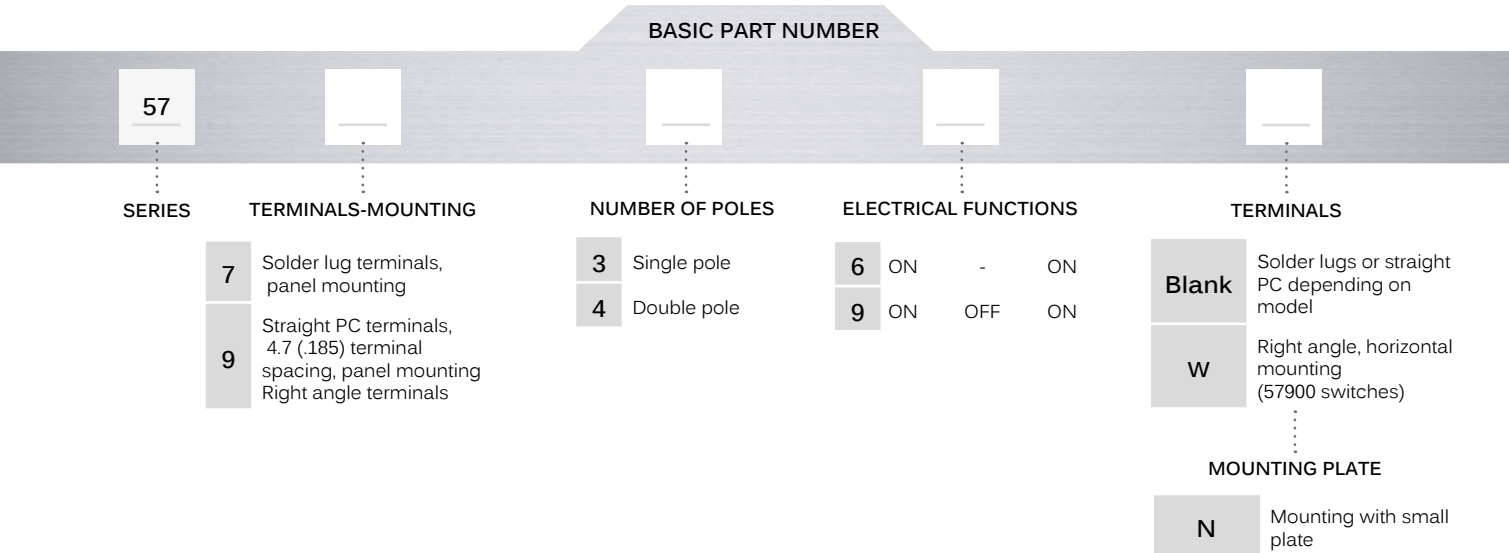


57000 series

VDE approved rocker and paddle switches



BUILD YOUR PART NUMBER



ABOUT THIS SERIES

On the following pages, you will find successively basic part numbers of switches and options in the same order as in above chart.

⚠ **Notice:** please note that not all combinations of above numbers are available. Refer to the following pages for further information.

57000 series

VDE approved rocker and paddle switches

PANEL MOUNTING - SOLDER LUG TERMINALS LARGE ROCKER OR PADDLE



	III	II	I	
Single pole	2-3		1-2	
Double pole	5-6		4-5	
57736A	57746A	ON	-	ON
57739A	57749A	ON	OFF	ON

PANEL MOUNTING - STRAIGHT PC TERMINALS LARGE ROCKER OR PADDLE



	III	II	I	
Single pole	2-3		1-2	
Double pole	5-6		4-5	
57936A	57946A	ON	-	ON
57939A	57949A	ON	OFF	ON

PANEL MOUNTING - SOLDER LUG TERMINALS SMALL OR MEDIUM ROCKER OR PADDLE



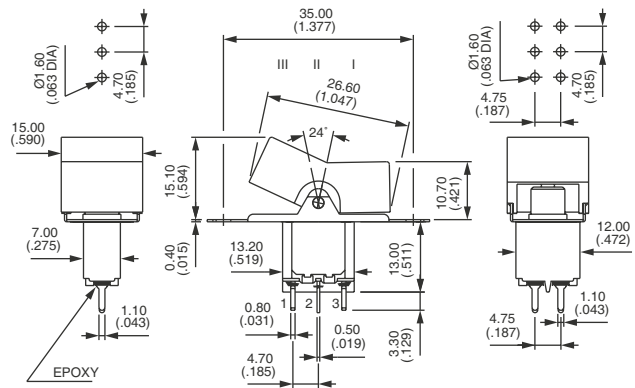
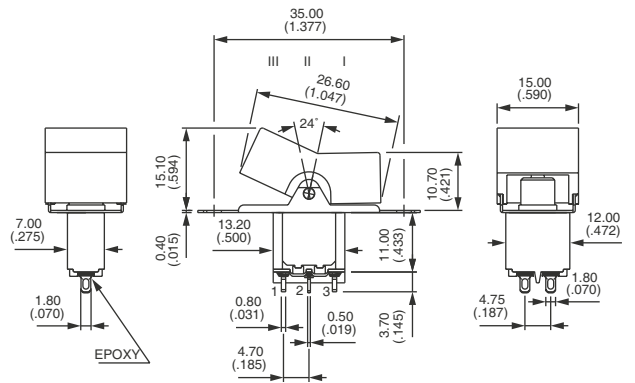
	III	II	I	
Single pole	2-3		1-2	
Double pole	5-6		4-5	
57736NA	57746NA	ON	-	ON
57739NA	57749NA	ON	OFF	ON

PANEL MOUNTING - STRAIGHT PC TERMINALS SMALL OR MEDIUM ROCKER OR PADDLE

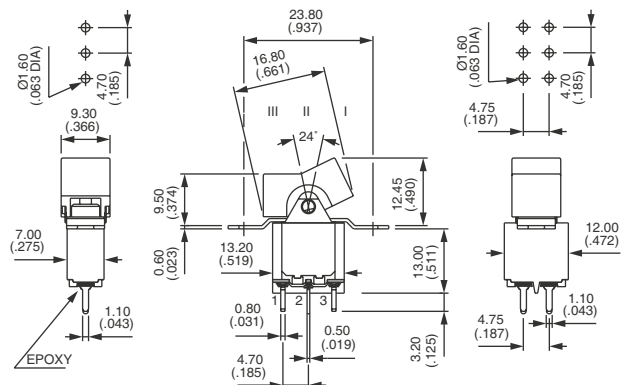
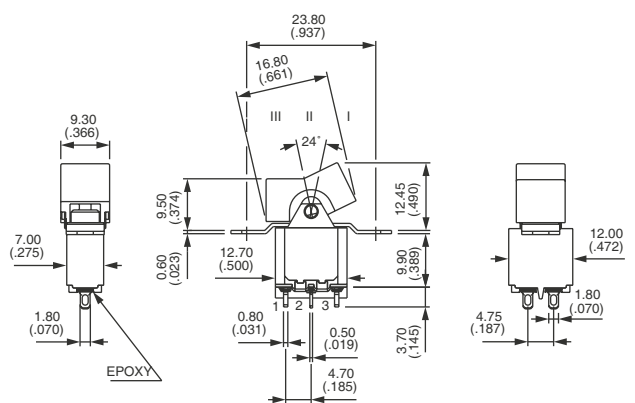


	III	II	I	
Single pole	2-3		1-2	
Double pole	5-6		4-5	
57936NA	57946NA	ON	-	ON
57939NA	57949NA	ON	OFF	ON

Shown with rocker U530



Shown with rocker U620



57000 series

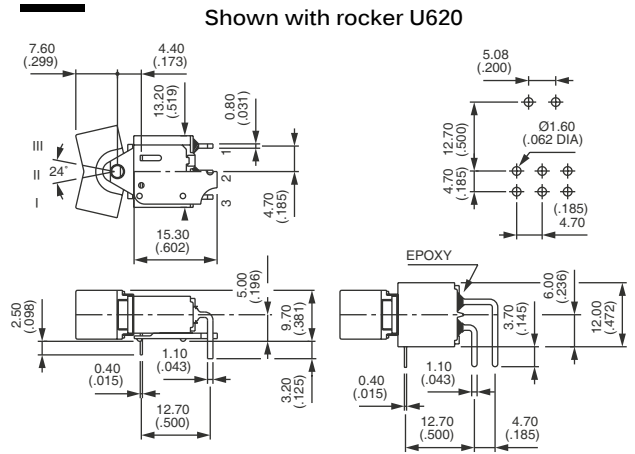
VDE approved rocker and paddle switches

RIGHT ANGLE TERMINALS - HORIZONTAL

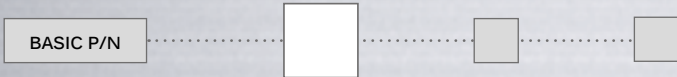


	III	II	I
Single pole	2-3		1-2
Double pole*	5-6		4-5
57936WA	57946WAX433	ON	ON
57939WA	57949WAX433	ON	OFF ON

* In double pole W models, spacing between poles on PCB is different from standard : 4.7 mm (.185) instead of 3.81 mm (.150). Part number X433. Also available for VERTICAL mounting (on request).



AGENCY APPROVALS



VDE
VDEUL
VDEULCSA

To order a switch marked UL and/or CSA, complete above box with desired approvals (specify VDE even if the product is systematically marked).

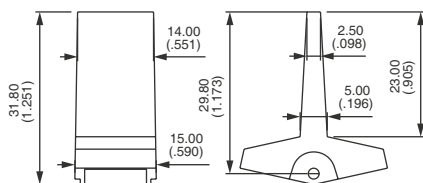
ACTUATORS



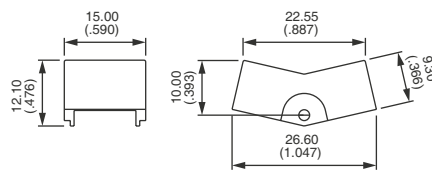
For actuator colors, replace "0" with number :

- 1 Blue
- 1/4 Dark blue
- 2 Black
- 3 Green
- 4 Grey
- 5 Yellow
- 7 Ivory
- 7/1 White
- 9 Orange

FOR 57000A MODELS



U490
Large paddle

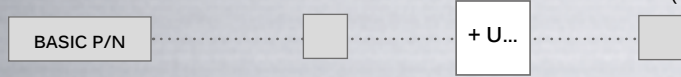


U530
Large rocker

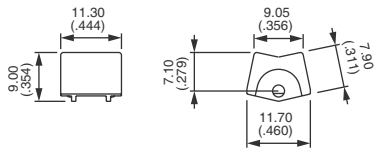
57000 series

VDE approved rocker and paddle switches

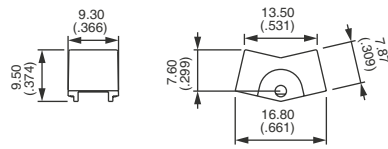
ACTUATORS (CONTINUED)



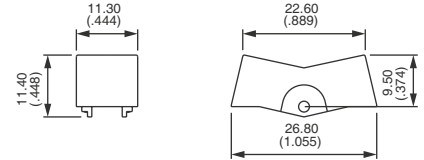
FOR 57000NA AND 57000WA MODELS



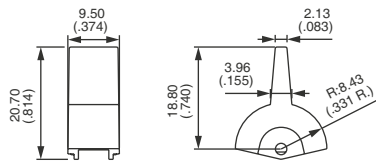
U730
Small rocker



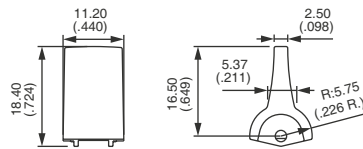
U620
Medium rocker



U1010
Large rocker
For 57000WA, available on DP only.

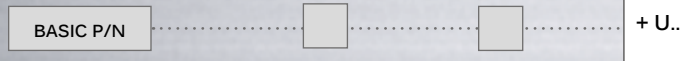


U610
Narrow paddle

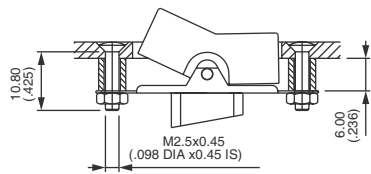


U700
Broad paddle

MOUNTING ACCESSORIES

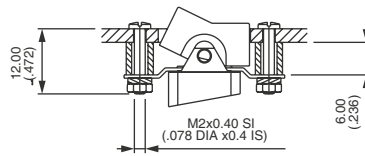


FOR ROCKER U530 OR PADDLE U490



U543
Spacers, screws and nuts

FOR ROCKERS U620 OR U730
FOR PADDLES U610 OR U700



U1022
Spacers, screws, nut and washers